

GENERAL NOTES

- This drawing is confidential and remains the property of DH Scaffold Services Ltd. No unauthorised copy, disclosure or use to a third party is to be made without prior consent and is to be returned on request.
- This drawing has been prepared from information supplied to us by the Client/Contractor, who should check that the requirements have correctly been interpreted and that all loadings, dimensions, details, lift heights etc are correct and practicable. No alteration in the loading may be made without consultation with DH Scaffold Services Ltd.
- The Contractor is to prepare all foundations prior to erection and to check that it can sustain the loads shown.
- The scaffold is to be tied using a suitable system in accordance with TG:20 Section 9 and to be subject to testing in accordance with TG:4.
- No temporary roof can be made totally watertight. Snow load is assessed using BSEN1991-1-3, unless a snow management system is adopted.
- No modification whatsoever is to be made to the scaffold on this drawing without seeking permission from DH Scaffold Services Ltd and may only be carried out after receiving written confirmation.
- It is the Main Contractors responsibility to check that the existing structure will span between the supports and can be shored in the way as designed.
- This scaffold has been designed using TG20 and is based on good quality galvanized tube to BS1139:1982
- All dimensions are as stated. Written dimensions take precedence over stated dimensions. Do not scale from this drawing.
- The scaffold must be constructed in accordance with TG20 and SG4.



SG4:15
This scaffold must be constructed as TG:20 and SG4:15

LOADINGS

Maximum calculated leg load =	SEE DRAWING
Maximum calculated tie load =	N/A
Imposed load =	N/A
Wind load =	As BSEN1991-1-4
Maximum no. of boarded levels =	N/A
Scaffold designation =	N/A

AMENDMENTS

REV	DATE	DESCRIPTION	BY
-	-		-

PREPARED FOR:-



PREPARED BY:-



T: 0114 230 0923
W: www.dhscaffoldservices.co.uk E: ian@dhscaffoldservices.co.uk

Drawing status:- **FOR CONSTRUCTION**

Designed by/Date:- MC 24.07.20	Checked by/Date:- [Signature] 24.07.20	Project No.:- DH/10894/1	Revision:-
Approved:- [Signature] 24.07.20		Scales: 1:50@A1	

Project:-
Market Cross, Swaffham, Norfolk

Title:-
Temporary Cover

Contractor:-
SEE QUOTE

KEY

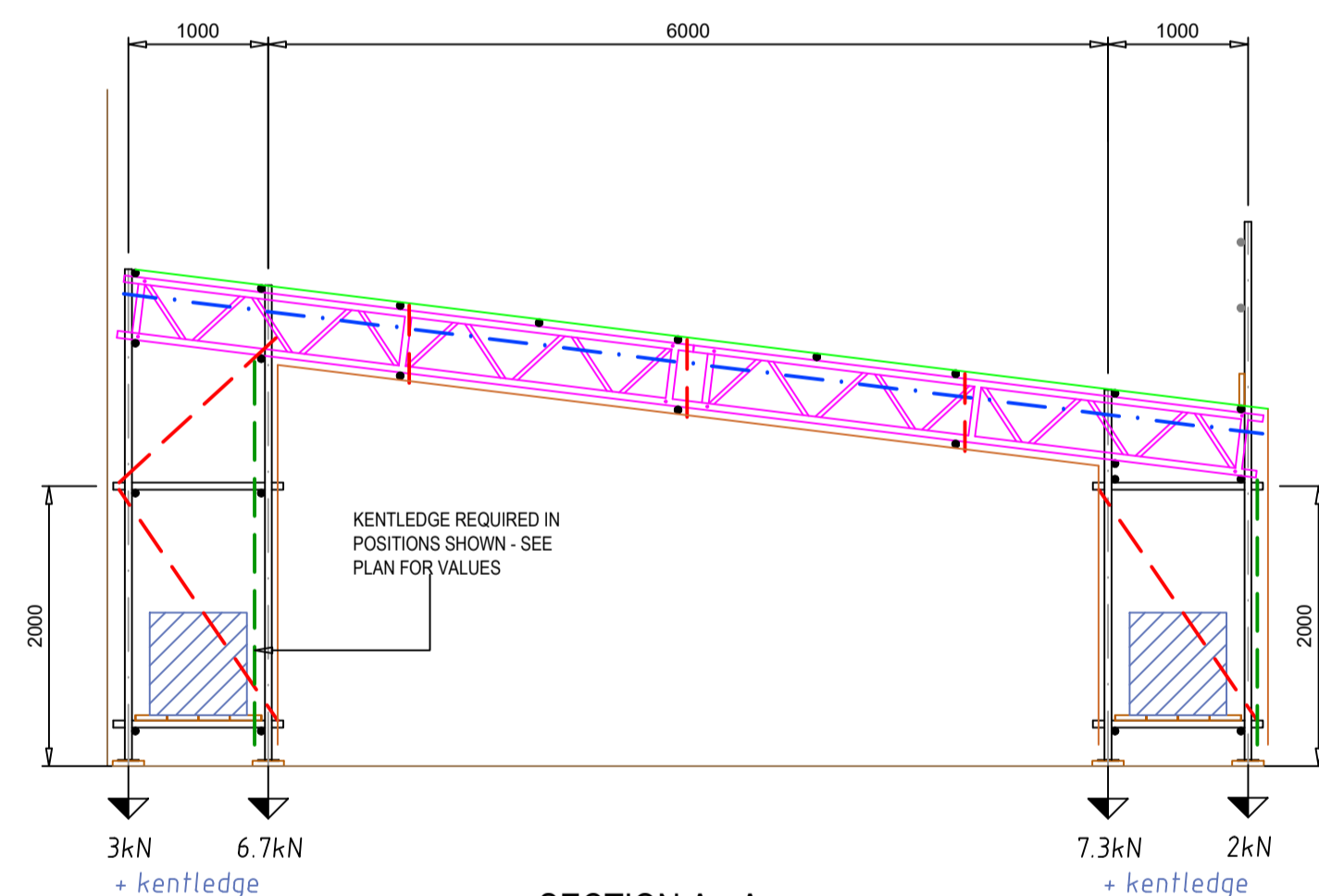
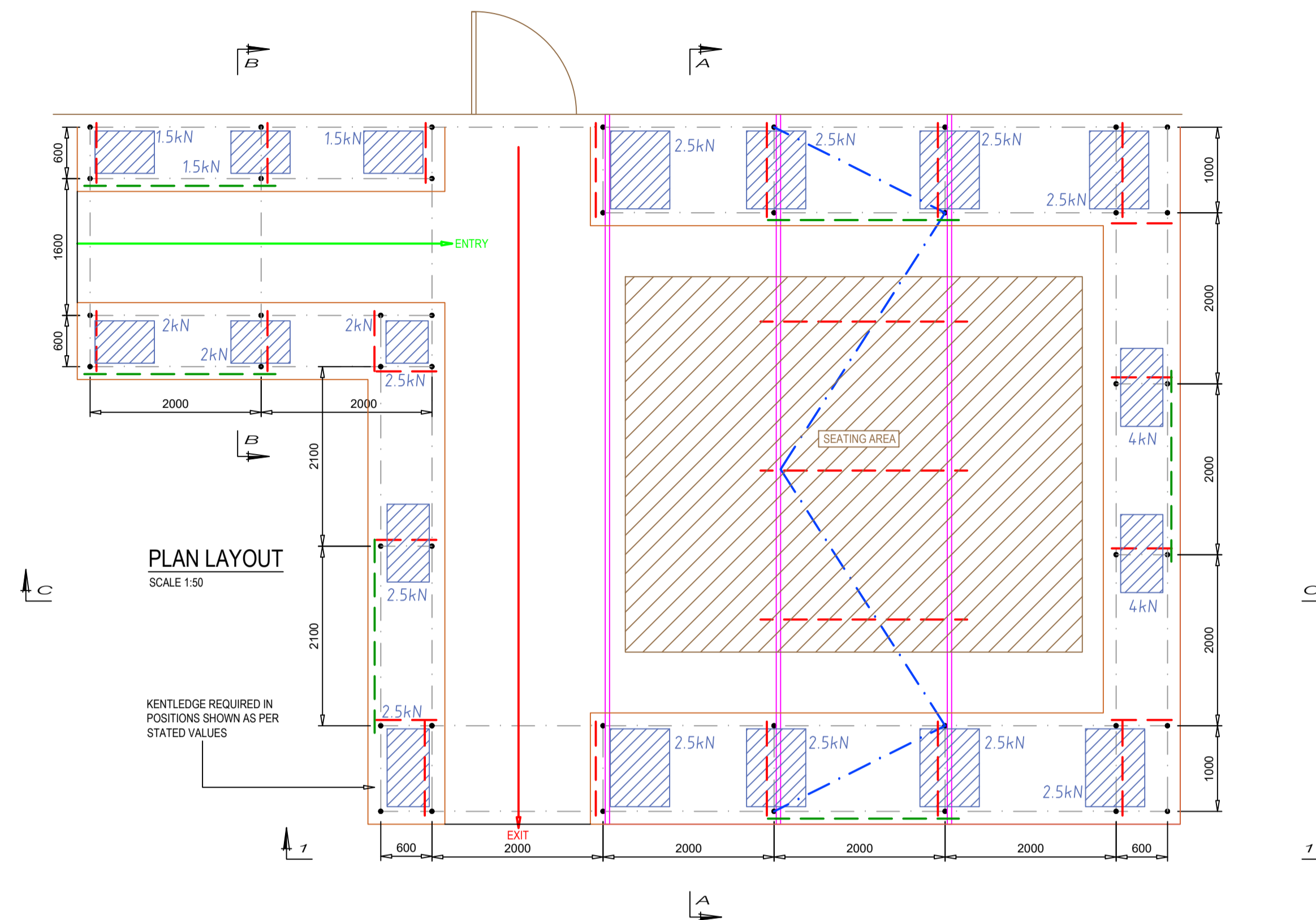
- = LEDGER BRACE FOR FULL HEIGHT AS SHOWN AS PER NASC TG20 CURRENT EDITION. THE BRACING MUST BE CONNECTED ON SWIVELS TO UPRIGHTS OR ON DOUBLES TO LEDGERS AT NO MORE THAN 300mm FROM THE NODE.
- = FACE BRACE FOR FULL HEIGHT AS SHOWN AS PER NASC TG20 CURRENT EDITION. THE BRACING MUST BE CONNECTED ON SWIVELS TO UPRIGHTS OR ON DOUBLES TO LEDGERS AT NO MORE THAN 300mm FROM THE NODE.
- = PLAN BRACE WITH LOAD BEARING COUPLERS AS SHOWN. TO BE FIXED WITHIN 300mm OF NODE.
- = PREFABRICATED ALLOY 450mm DEEP BEAMS, LACED AND BRACED AT 1M C/C TOP CHORD AND 2M C/C BOTTOM CHORD AT NODE POSITIONS USING LOAD BEARING COUPLERS TO BOTH CHORDS. THIS MUST BE IN ACCORDANCE WITH MANUFACTURES DETAILS.
- = MONARFLEX SHEETING SECURED TO FACE OF SCAFFOLD AT LEDGER POSITION USING ZIP TIES OR SIMILAR APPROVED SYSTEM OF FIXING.



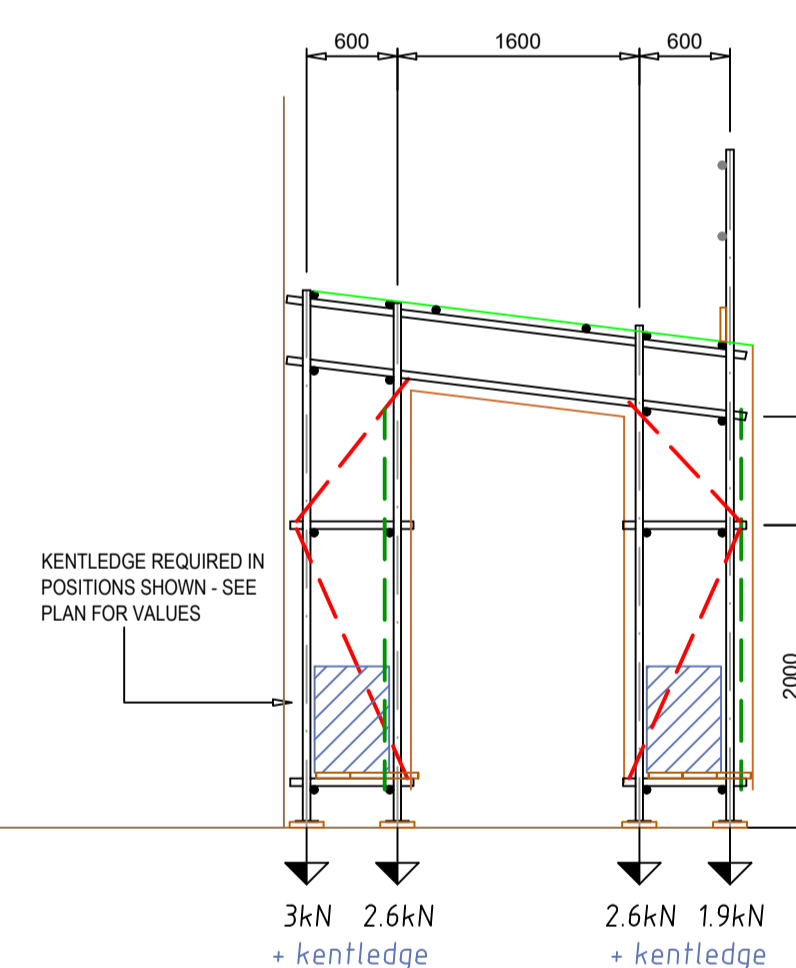
RISK
THE BUILDING LINE SHOWN HAS BEEN DRAWN FROM MEASUREMENTS TAKEN ON SITE. PRIOR TO ERECTION, THE BUILDING LINE MUST BE CHECKED ON SITE AND IF ANY DISCREPANCIES ARE FOUND DH SCAFFOLD SERVICES LTD MUST BE CONTACTED.



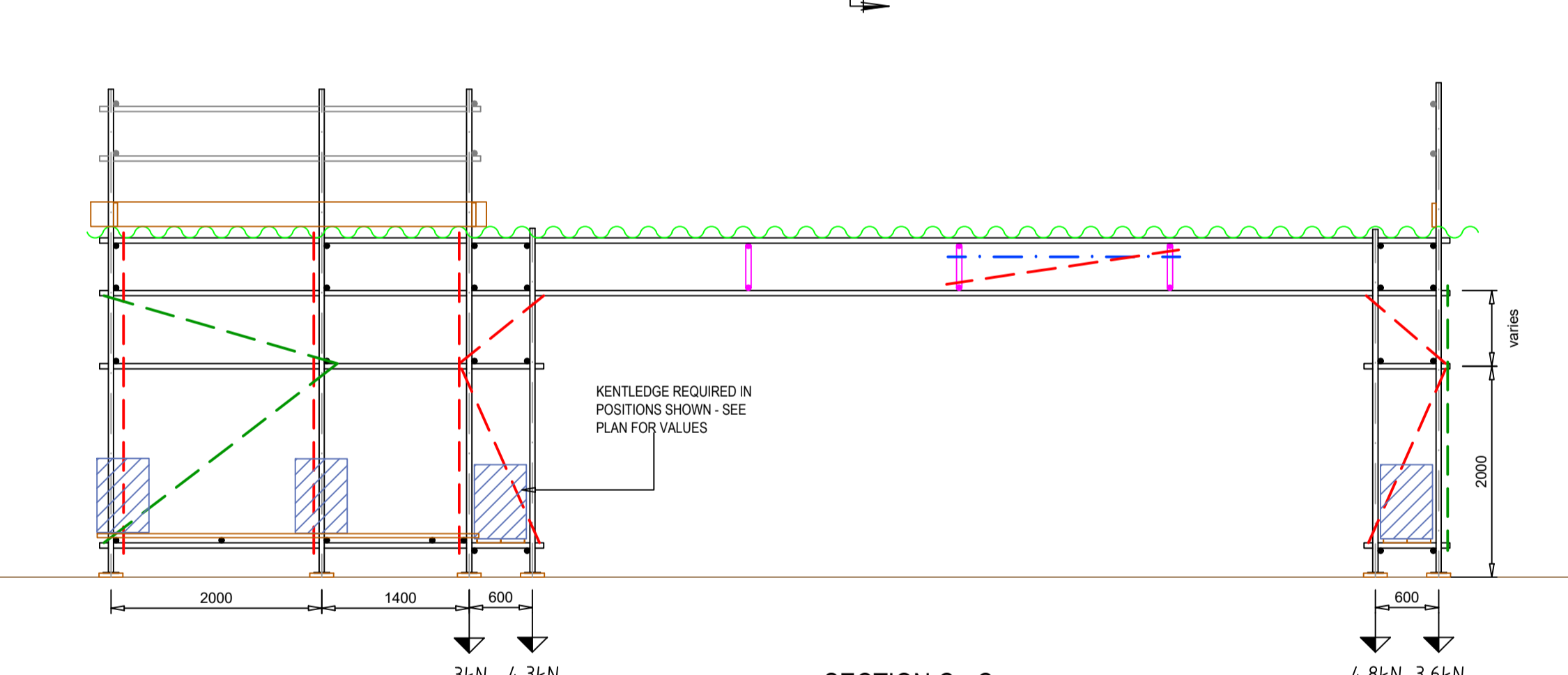
RISK
IT IS THE MAIN CONTRACTORS RESPONSIBILITY TO PREPARE THE GROUND PRIOR TO ERECTION TO PROVIDE ADEQUATE SUPPORT AND TO DISPERSE THE IMPOSED LOADS FROM THE SCAFFOLD.



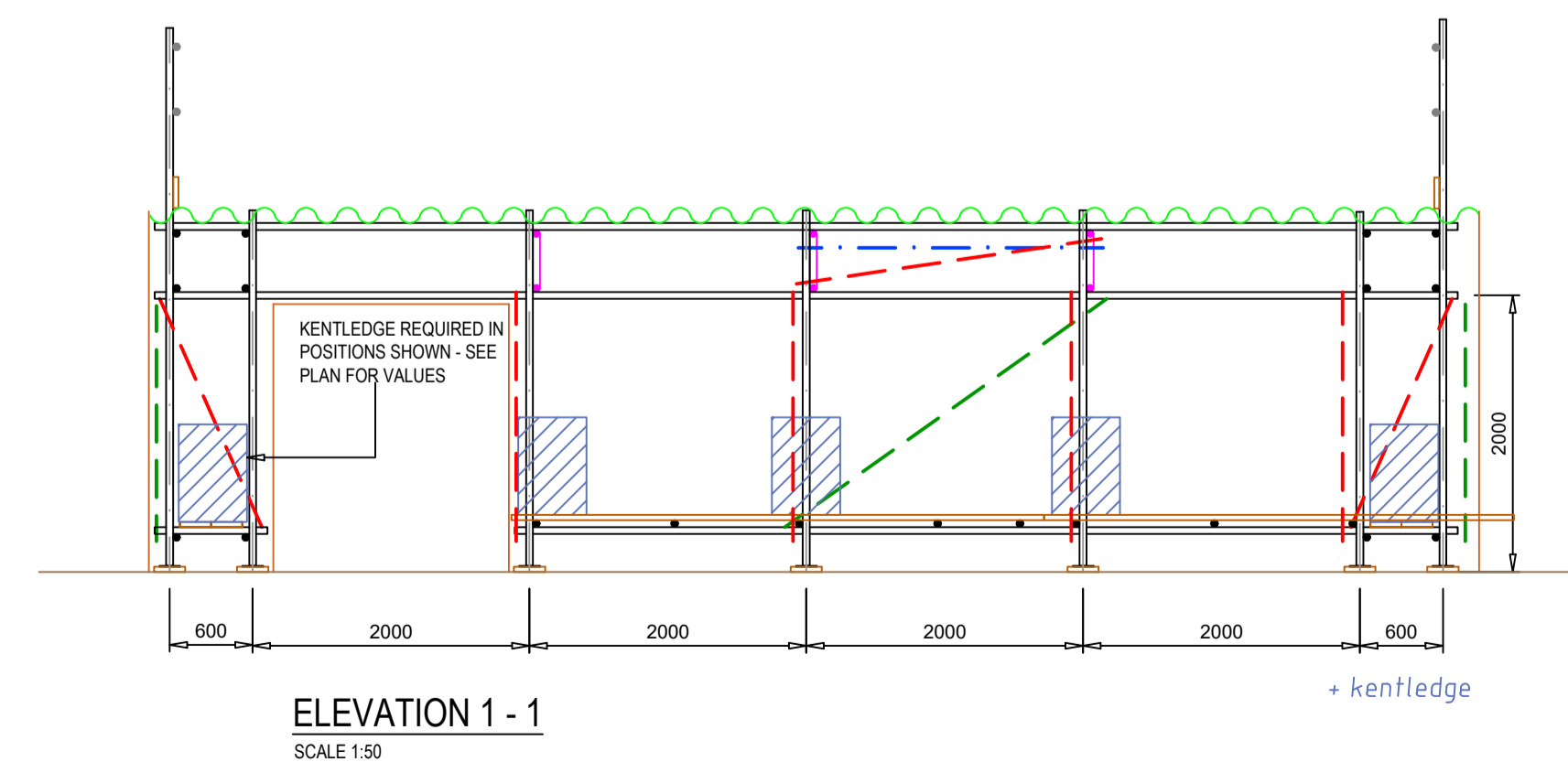
SECTION A - A
SCALE 1:50



SECTION B - B
SCALE 1:50



SECTION C - C
SCALE 1:50



ELEVATION 1 - 1
SCALE 1:50